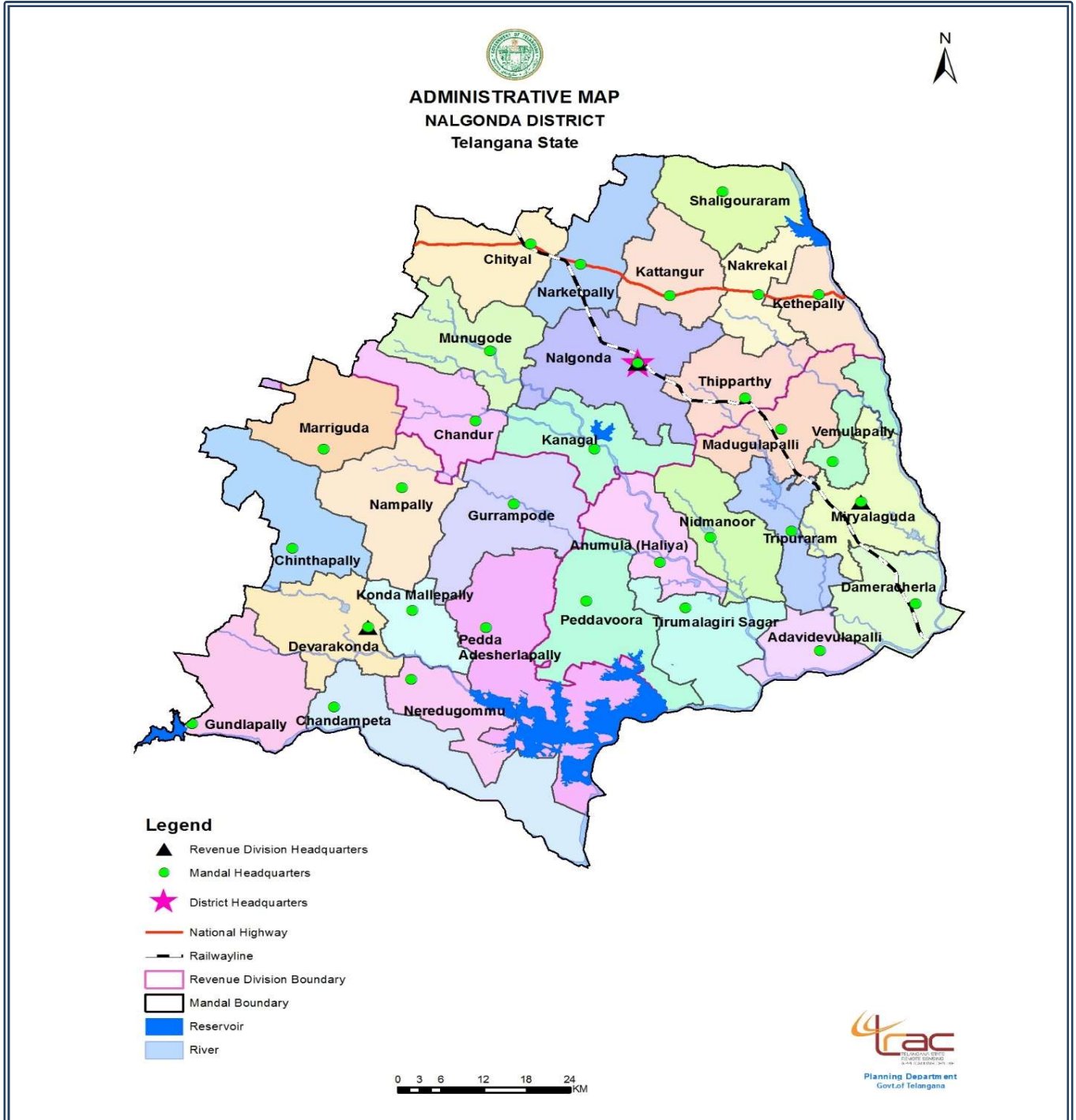


# Know Your District - Plan Your District

## NALGONDA



Government of Telangana

Planning Department

December, 2016

## Nalgonda District

Sl. No	Parameters	State	Nalgonda
<b>I</b>	<b>KEY CHARACTERISTICS</b>		
<b>1</b>	<b>Geographical Area (Sq. Kms.)</b>	<b>112077</b>	<b>7122</b>
<b>2</b>	<b>Administrative Units</b>		
a	Revenue Villages	10859	565
b	Revenue Mandals	584	31
c	Revenue Divisions	68	3
d	Gram Panchayats	8695	502
e	Mandal Praja Parishads	438	26
f	Zilla Praja Parishads	9	1
g	Municipalities (incl. Corpns. & NPs)	73	3
<b>II</b>	<b>DEMOGRAPHIC PROFILE</b>		
<b>1</b>	<b>Population as per 2011 Census</b>		
	<b>Total</b>	<b>35003674</b>	<b>1618416</b>
a	Males	17611633	818306
b	Females	17392041	800110
c	Sex Ratio (Females per 1000 Males)	988	978
d	Rural	21395009	1250113
e	Urban	13608665	368303
f	Rural Population (%)	61.12	77.24
g	Urban Population (%)	38.88	22.76
<b>2</b>	<b>Households</b>	<b>8303612</b>	<b>401728</b>
<b>3</b>	<b>Density of Population (per Sq. Km.)</b>	<b>312</b>	<b>227</b>
<b>4</b>	<b>Child Population (0 - 6 Years)</b>		
	<b>Total</b>	<b>3899166</b>	<b>181996</b>
a	Males	2017935	94926
b	Females	1881231	87070
c	Rural	2369374	143491
d	Urban	1529792	38505
e	Sex Ratio (Females per 1000 Males)	932	917
<b>5</b>	<b>Literates</b>		
	<b>Total</b>	<b>20696778</b>	<b>915742</b>
a	Males	11701729	534573
b	Females	8995049	381169
<b>6</b>	<b>Literacy Rate</b>		
	<b>Total</b>	<b>66.54</b>	<b>63.75</b>
a	Males	75.04	73.90
b	Females	57.99	53.46

Sl. No	Parameters	State	Nalgonda
<b>7</b>	<b>Scheduled Castes Population</b>		
	<b>Total</b>	<b>5408800</b>	<b>292951</b>
a	Males	2693127	145964
b	Females	2715673	146987
c	Sex Ratio	1008	1007
<b>8</b>	<b>Scheduled Tribes Population</b>		
	<b>Total</b>	<b>3177940</b>	<b>209252</b>
a	Males	1607656	109272
b	Females	1570284	99980
c	Sex Ratio	977	915
<b>9</b>	<b>Working Population</b>		
	<b>Total</b>	<b>16341942</b>	<b>806091</b>
a	Males	9678177	451912
b	Females	6663765	354179
<b>10</b>	<b>Occupation of Working Population</b>		
a	Cultivators		
	<b>Total</b>	<b>3151389</b>	<b>158951</b>
	i. Males	2009546	106735
	ii. Females	1141843	52216
b	Agricultural Labourers		
	<b>Total</b>	<b>5915151</b>	<b>389621</b>
	i. Males	2532735	154632
	ii. Females	3382416	234989
c	Household Industries		
	<b>Total</b>	<b>776529</b>	<b>19633</b>
	i. Males	271767	11069
	ii. Females	504762	8564
d	Other Workers		
	<b>Total</b>	<b>6498873</b>	<b>237886</b>
	i. Males	4864129	179476
	ii. Females	1634744	58410
e	Non-Working		
	<b>Total</b>	<b>18661732</b>	<b>812325</b>
	i. Males	7933456	366394
	ii. Females	10728276	445931
<b>11</b>	<b>Population as per Samagra Kutumba Survey (SKS)</b>		
a	Households	10395629	509502
b	Total Population	36876544	1682883

Sl. No	Parameters	State	Nalgonda
c	Scheduled Castes	6444584	321496
d	Scheduled Tribes	3644453	231991
e	Backward Castes	18841009	887485
f	Others	7946498	241911
<b>12</b>	<b>Minorities Population</b>	<b>5372197</b>	<b>112397</b>
<b>III</b>	<b>AGRICULTURE</b>		
<b>1</b>	<b>Land Holdings</b>		
a	Marginal (up to 1 Hect.)	3420202	210618
b	Small (1-2 Hects.)	1318390	96135
c	Semi-Medium (2-4 Hects.)	598145	47503
d	Medium (4-10 Hects.)	165127	14159
e	Large (10 Hects. and above)	15647	1185
	<b>Total</b>	<b>5517511</b>	<b>369600</b>
<b>2</b>	<b>Cropped Area (Hects.)</b>		
a	Gross Cropped Area	4893148	346516
b	Net Cropped Area	4174532	311801
c	Gross Irrigated Area	2027663	109161
d	Net Irrigated Area	1486241	76120
<b>3</b>	<b>Area under different Crops (Hects.)</b>		
a	Rice	1471710	212730
b	Jowar	83401	2162
c	Maize	712981	2540
d	Red gram	251121	21831
e	Green gram	95524	21873
f	Black gram	31221	941
g	Bengal gram	80766	226
h	Groundnut	177914	11770
i	Sunflower	17574	12
j	Chillies	82649	5286
k	Sugarcane	34775	1574
l	Cotton	1677492	341655
m	Horticulture	664326	57348
<b>4</b>	<b>Agricultural Marketing</b>		
a	Agricultural Market Committees	180	9
b	Rythu Bazars	36	2
<b>5</b>	<b>Livestock Population</b>		
a	Cattle	4880293	218220
b	Buffaloes	4160419	299647

Sl. No	Parameters	State	Nalgonda
c	Sheep	12835761	879990
d	Goat	4575695	287852
e	Others	620723	28171
	<b>Total</b>	<b>27072891</b>	<b>1713880</b>
<b>6</b>	<b>Poultry Population</b>	<b>80750833</b>	<b>2532797</b>
<b>7</b>	<b>Veterinary facilities</b>		
a	Poly Clinics	8	1
b	Hospitals	100	5
c	Dispensaries	907	56
d	Mobile Clinics	37	2
e	Rural Livestock Units	1102	59
<b>8</b>	<b>Fisheries</b>		
a	Fish Rearing Tanks/Reservoirs	24294	2461
	Water spread Area (Hects.)	800269	59184
b	Fishermen Coop. Societies	3867	161
	Members	265071	14395
c	Seed released into Tanks/Reservoirs by Govt.	3824	168
	Seed Released (lakh Nos.)	2616	295.23
d	Estimated Production, 2016-17 (Tonnes)	343447	16365
	i. Fish	334952	15815
	ii. Prawn	8495	550
<b>IV</b>	<b>HEALTH INFRASTRUCTURE (GOVT.)</b>		
<b>1</b>	<b>Allopathic Hospitals</b>		
a	Health Sub-Centres	4797	257
b	Primary Health Centres	683	32
c	Community Health Centres	98	2
d	Area Hospitals	31	2
e	District Hospitals	6	1
f	Teaching Hospitals	18	0
	<b>Total</b>	<b>5633</b>	<b>294</b>
<b>2</b>	Ayurveda Hospitals (incl. Dispensaries)	272	17
<b>3</b>	Homeopathic Hospitals (incl. Dispensaries)	130	12
<b>4</b>	Unani Hospitals (incl. Dispensaries)	141	13
<b>5</b>	Naturopathy Hospitals (incl. Dispensaries)	24	0
<b>6</b>	Doctors in all Hospitals	2595	64
<b>7</b>	Beds in all Hospitals	20389	1380
<b>V</b>	<b>EDUCATION</b>		
a	Primary Schools	21947	1201

Sl. No	Parameters	State	Nalgonda
	Enrollment	1431438	58767
b	Upper Primary Schools	7311	298
	Enrollment	939109	39880
c	High Schools	11803	540
	Enrollment	3689461	156501
	<b>Total Schools</b>	<b>41061</b>	<b>2039</b>
	<b>Total Enrollment</b>	<b>6060008</b>	<b>255148</b>
d	Model Schools	192	17
	Enrollment	85687	7569
e	KGBV Schools	391	22
	Enrollment	72583	4239
f	Central Schools	47	3
	Enrollment	27294	1404
g	Junior Colleges	2537	111
h	Degree Colleges	1196	51
	Seats	426964	19968
i	Engineering Colleges	219	6
	Seats	104598	1680
j	Pharmacy Colleges	123	3
	Seats	9226	220
k	MBA Colleges	305	5
	Seats	32874	288
l	MCA Colleges	37	1
	Seats	2436	60
m	B.Ed. Colleges	217	25
	Seats	19100	2150
n	Law Colleges	21	1
	Seats	3190	60
<b>VI</b>	<b>SOCIAL SECURITY</b>		
<b>1</b>	<b>Aasara Pensions</b>		
a	Old Age	1341680	70013
b	Disabled	457087	27850
c	Widow	1326049	70855
d	Weavers	34179	2529
e	Toddy Tappers	57349	7066
f	Anti-Retroviral Therapy (A.R.T) Patients	30674	1363
	<b>Total</b>	<b>3247018</b>	<b>179676</b>
<b>2</b>	<b>FA to Beedi Workers</b>	<b>348763</b>	<b>0</b>

Sl. No	Parameters	State	Nalgonda
<b>3</b>	<b>Public Distribution System</b>		
a	Fair Price Shops	17229	1000
b	Food Security Cards	8207431	419043
c	Anthyodaya Food Security Cards	567911	28923
d	Annapoorna Cards	5084	77
	<b>Total</b>	<b>8797655</b>	<b>449043</b>
<b>4</b>	<b>Sada Bainama Regularization</b>		
a	Applications Received	1119203	33144
b	Survey Numbers Covered	1563124	41325
<b>5</b>	<b>2BHK Housing Programme</b>		
a	Houses Allotted	72596	2400
	i. Rural	39762	1920
	ii. Urban	32834	480
b	Sanctioned	62426	2000
<b>6</b>	<b>Assignment of Government Land</b>		
a	Land Assigned (Acres)	2040320	134787
b	Beneficiaries	1332127	117492
<b>VII</b>	<b>POWER</b>		
<b>1</b>	<b>Sub-Stations</b>		
a	33/11 KV	2497	144
b	132/33 KV	203	15
c	220/132 KV	66	5
d	400/220 KV	7	0
	<b>Total</b>	<b>2773</b>	<b>164</b>
<b>2</b>	<b>Electricity Connections</b>		
a	Domestic Connections	9504305	363927
b	Industrial Connections	145707	3891
c	Agriculture Connections	2080706	165131
d	Commercial Connections	1171991	42466
e	Other Connections	189046	6805
	<b>Total</b>	<b>13091755</b>	<b>582220</b>
<b>VIII</b>	<b>ROAD INFRASTRUCTURE</b>		
<b>1</b>	<b>Roads &amp; Buildings Department (Length in Kms.)</b>		
	i. State Highways	2731	267
	ii. Major District Roads	13058	186
	iii. Rural Roads	9162	542
	<b>Total</b>	<b>24950</b>	<b>994</b>

Sl. No	Parameters	State	Nalgonda
	<b>Classification of Roads (Length in Kms.)</b>		
	i. Four Lane Roads	648	99
	ii. Double Lane Roads	7419	271
	iii. Intermediate Lane Roads	527	17
	iv. Single Lane Roads	16357	608
	<b>Total</b>	<b>24950</b>	<b>994</b>
<b>2</b>	<b>Panchayati Raj Department (Length in Kms.)</b>		
	i. Black Top Roads	23185	1626
	ii. WBM Roads	13118	1197
	iii. Gravel Roads	16343	1345
	iv. Earthen Roads	18235	1336
	v. Others (CC Roads)	2899	225
	<b>Total</b>	<b>73781</b>	<b>5729</b>
<b>3</b>	<b>Gram Panchayats having Road Facility</b>		
a	GPs having BT roads	8231	491
b	GPs to be covered with BT roads	455	12
<b>4</b>	<b>Habitations (other than GPs) having Road Facility</b>		
a	Total Habitations	15738	1179
b	Habitations having all weather roads	10204	933
c	Habitations not having all weather roads	5534	246
<b>IX</b>	<b>TRANSPORT</b>		
<b>1</b>	<b>Road Transport</b>		
a	RTC Bus Depots	95	4
b	RTC Fleet of Buses	10482	422
c	Daily Operated Length (Kms.)	3631505	175010
<b>2</b>	<b>Railways</b>		
a	Railway Stations	229	9
b	Track Length (Kms.)	1592	134
<b>X</b>	<b>FOREST</b>		
<b>1</b>	<b>Forest Cover (Sq. Kms.)</b>	<b>26904</b>	<b>644.85</b>
	Percentage of Forest Cover	24.00	9.05
<b>2</b>	<b>Telangana ku Haritha Haram</b>		
	Action Plan for 2017		
a	Nurseries	2843	189
b	Seedlings (lakh Nos.)	4536	220
c	Plantation (lakh Nos.)	4000	200



Sl. No	Parameters	State	Nalgonda
<b>XI</b>	<b>IRRIGATION</b>		
<b>1</b>	<b>Irrigation Projects</b>		
a	Major Projects	26	6
b	Medium Projects	34	2
<b>2</b>	<b>Mission Kakatiya</b>		
a	Minor Irrigation Tanks	46531	2306
b	Sanctions accorded for restoration		
	i. Mission Kakatiya Phase-I	8165	380
	ii. Mission Kakatiya Phase-II	9113	499
<b>XII</b>	<b>RURAL WATER SUPPLY</b>		
a	Hand Pumps	157873	10156
b	Protected Water Supply Schemes	21910	1168
c	Comprehensive Protected Water Supply Schemes	5364	1162
d	Individual Household Latrines	1663839	79309
<b>XIII</b>	<b>MISSION BHAGHEERATHA</b>		
a	Habitations to be Covered	24248	1700
b	Pipeline to be Laid (Kms.)	49286	3504
<b>XIV</b>	<b>INDUSTRIES</b>		
<b>1</b>	i. Industrial Units	28515	562
	ii. Employees	605443	1904
	iii. Investment (Rs. Crore)	116022	28
<b>2</b>	<b>TS-iPASS</b>		
	i. Proposed Industries	2926	143
	ii. Proposed Employment	195016	3650
	iii. Proposed Investment (Rs. Crore)	49427	810
<b>3</b>	<b>Mines</b>		
a	Mineral Deposits: Road Metal, Quartz, Feldspar, Block Granite, Lime Stone, Lime Stone Slabs, Ordinary Sand		
b	Mines Leased		
	i. Major	104	3
	ii. Minor	2980	146
	<b>Total</b>	<b>3084</b>	<b>149</b>
c	Sand Reaches allotted to TSMDC Ltd.		
	i. Disilting Areas	20	3
	Quantity (CBM)	33911410	877450
	ii. Specified Sand bearing Areas	57	0
	Quantity (CBM)	9296724	0
	iii. Pattalands	180	9
	Quantity (CBM)	3840815	130969

Sl. No	Parameters	State	Nalgonda
<b>XV</b>	<b>HANDLOOMS AND POWERLOOMS</b>		
a	Societies	336	22
b	Weavers in Cooperative Fold	82438	5412
c	Weavers outside Cooperative Fold	38002	6352
d	Powerloom Weavers	49112	1585
<b>XVI</b>	<b>WELFARE</b>		
<b>1</b>	<b>Scheduled Castes</b>		
a	Colleges attached Hostels	160	11
	Enrollment	19077	2010
b	Pre-Matric Hostels	734	47
	Enrollment	59928	4348
<b>2</b>	<b>Scheduled Tribes</b>		
a	Student Hostels (incl. Ashram Schools)		
	Hostels for Boys	324	24
	Hostels for Girls	148	7
	<b>Total</b>	<b>472</b>	<b>31</b>
b	Boarders		
	Boys	65635	7186
	Girls	52141	3149
	<b>Total</b>	<b>117776</b>	<b>10335</b>
<b>3</b>	<b>Backward Classes</b>		
a	Student Hostels (incl. Colleges)		
	Hostels for Boys	474	30
	Hostels for Girls	226	16
	<b>Total</b>	<b>700</b>	<b>46</b>
b	Boarders		
	Boys	44373	3566
	Girls	24328	2191
	<b>Total</b>	<b>68701</b>	<b>5757</b>
<b>XVII</b>	<b>RESIDENTIAL SCHOOLS</b>		
a	Scheduled Castes	262	12
	Students	96039	3776
b	Scheduled Tribes	89	8
	Students	21919	2065
c	Backward Classes	23	2
	Students	8282	1172
d	Minorities	71	2
	Students	12554	350

Sl. No	Parameters	State	Nalgonda
<b>XVIII</b>	<b>WOMEN AND CHILD WELFARE</b>		
a	ICDS Projects	149	9
b	Anganwadi Centres	35700	2093
c	Anganwadi Workers	28669	1818
d	Anganwadi Helpers	33248	1963
e	Children Enrolled	2427396	142324
<b>XIX</b>	<b>RURAL DEVELOPMENT</b>		
a	Self Help Groups	426705	28777
b	SHG Members	4442215	292696
c	SHGs provided with Bank Credit	63049	3480
<b>XX</b>	<b>TAX COLLECTION - LOCAL BODIES</b>		
a	Gram Panchayats	8695	502
	Demand (Rs. lakh)	42797	1946
b	Urban Local Bodies	73	3
	Demand (Rs. lakh)	164436	1700
<b>XXI</b>	<b>POST OFFICES</b>		
a	Head Post Offices	38	1
b	Sub Post Offices	692	23
c	Branch Post Offices	4143	179
	<b>Total</b>	<b>4873</b>	<b>203</b>
<b>XXII</b>	<b>BANK BRANCHES</b>		
a	Nationalized Banks	3413	118
b	Private Banks	833	16
c	Regional Rural Banks	817	75
d	Cooperative Banks	269	7
	<b>Total</b>	<b>5332</b>	<b>216</b>
e	ATMs	4605	162
<b>XXIII</b>	<b>TELEPHONES</b>		
a	Exchanges	1220	69
b	Telephone Connections	507540	11514
c	Public Telephones	6729	0
<b>XXIV</b>	<b>LAW AND ORDER</b>		
	Police Stations	799	40
<b>XXV</b>	<b>TOURISM AND CULTURE</b>		
a	TSTDC Units	49	3
b	Tourist Spots	464	21
c	TSS Artists	550	24



# ADMINISTRATIVE MAP

## Telangana State

