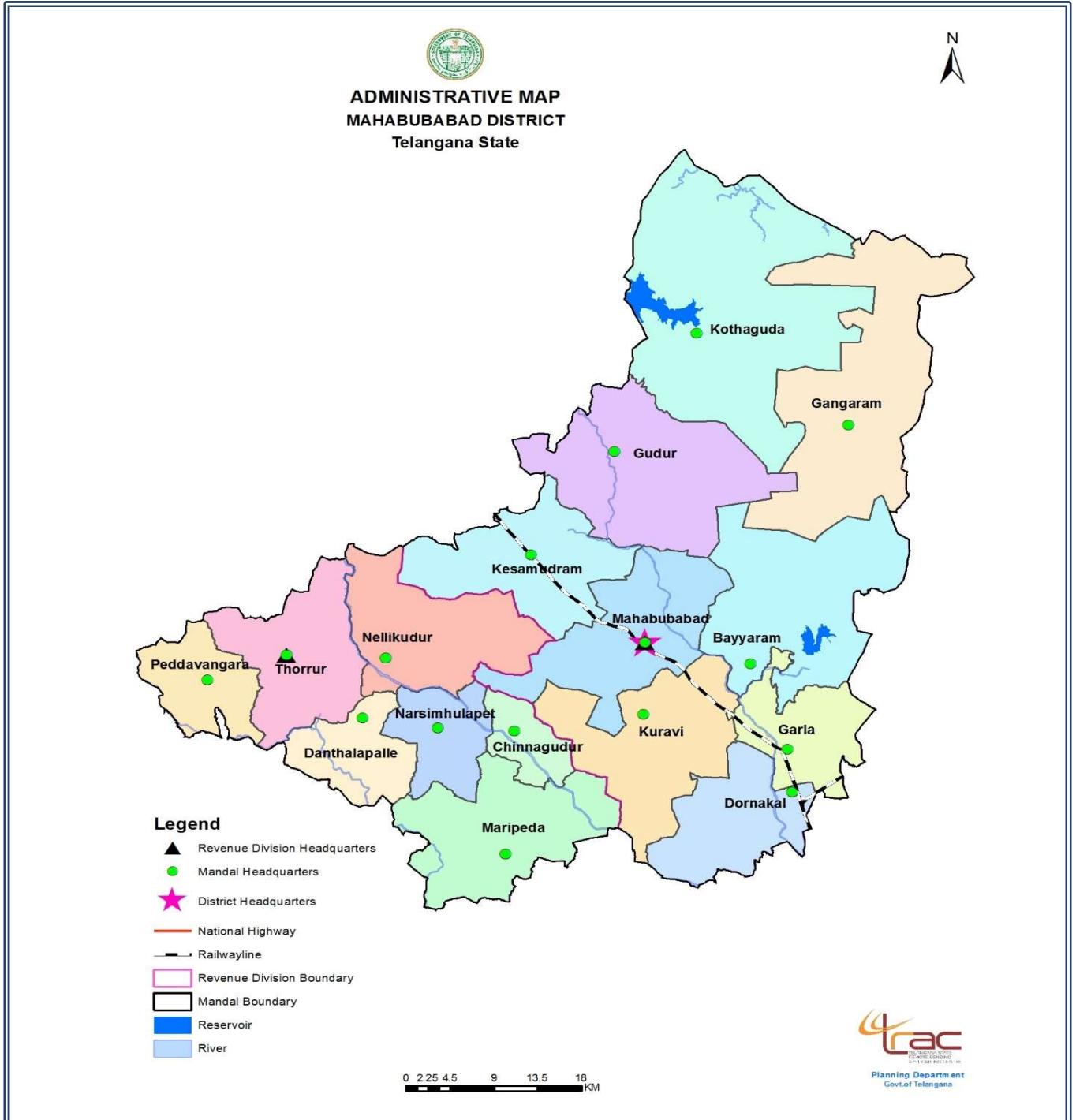


# Know Your District - Plan Your District

## MAHABUBABAD



Government of Telangana  
 Planning Department  
 December, 2016

## Mahabubabad District

Sl. No	Parameters	State	Mahabubabad
<b>I</b>	<b>KEY CHARACTERISTICS</b>		
<b>1</b>	<b>Geographical Area (Sq. Kms.)</b>	<b>112077</b>	<b>2877</b>
<b>2</b>	<b>Administrative Units</b>		
a	Revenue Villages	10859	285
b	Revenue Mandals	584	16
c	Revenue Divisions	68	2
d	Gram Panchayats	8695	231
e	Mandal Praja Parishads	438	12
f	Zilla Praja Parishads	9	0
g	Municipalities (incl. Corpns. & NPs)	73	1
<b>II</b>	<b>DEMOGRAPHIC PROFILE</b>		
<b>1</b>	<b>Population as per 2011 Census</b>		
	<b>Total</b>	<b>35003674</b>	<b>774549</b>
a	Males	17611633	388058
b	Females	17392041	386491
c	Sex Ratio (Females per 1000 Males)	988	996
d	Rural	21395009	698173
e	Urban	13608665	76376
f	Rural Population (%)	61.12	90.14
g	Urban Population (%)	38.88	9.86
<b>2</b>	<b>Households</b>	<b>8303612</b>	<b>195889</b>
<b>3</b>	<b>Density of Population (per Sq. Km.)</b>	<b>312</b>	<b>269</b>
<b>4</b>	<b>Child Population (0 - 6 Years)</b>		
	<b>Total</b>	<b>3899166</b>	<b>81082</b>
a	Males	2017935	42610
b	Females	1881231	38472
c	Rural	2369374	73684
d	Urban	1529792	7398
e	Sex Ratio (Females per 1000 Males)	932	903
<b>5</b>	<b>Literates</b>		
	<b>Total</b>	<b>20696778</b>	<b>396198</b>
a	Males	11701729	229809
b	Females	8995049	166389
<b>6</b>	<b>Literacy Rate</b>		
	<b>Total</b>	<b>66.54</b>	<b>57.13</b>
a	Males	75.04	66.52
b	Females	57.99	47.81

Sl. No	Parameters	State	Mahabubabad
<b>7</b>	<b>Scheduled Castes Population</b>		
	<b>Total</b>	<b>5408800</b>	<b>104508</b>
a	Males	2693127	51961
b	Females	2715673	52547
c	Sex Ratio	1008	1011
<b>8</b>	<b>Scheduled Tribes Population</b>		
	<b>Total</b>	<b>3177940</b>	<b>292778</b>
a	Males	1607656	148139
b	Females	1570284	144639
c	Sex Ratio	977	976
<b>9</b>	<b>Working Population</b>		
	<b>Total</b>	<b>16341942</b>	<b>407484</b>
a	Males	9678177	215413
b	Females	6663765	192071
<b>10</b>	<b>Occupation of Working Population</b>		
a	Cultivators		
	<b>Total</b>	<b>3151389</b>	<b>122597</b>
	i. Males	2009546	75881
	ii. Females	1141843	46716
b	Agricultural Labourers		
	<b>Total</b>	<b>5915151</b>	<b>204458</b>
	i. Males	2532735	81078
	ii. Females	3382416	123380
c	Household Industries		
	<b>Total</b>	<b>776529</b>	<b>7427</b>
	i. Males	271767	4349
	ii. Females	504762	3078
d	Other Workers		
	<b>Total</b>	<b>6498873</b>	<b>73002</b>
	i. Males	4864129	54105
	ii. Females	1634744	18897
e	Non-Working		
	<b>Total</b>	<b>18661732</b>	<b>367065</b>
	i. Males	7933456	172645
	ii. Females	10728276	194420
<b>11</b>	<b>Population as per Samagra Kutumba Survey (SKS)</b>		
a	Households	10395629	251739
b	Total Population	36876544	837365

Sl. No	Parameters	State	Mahabubabad
c	Scheduled Castes	6444584	122997
d	Scheduled Tribes	3644453	320532
e	Backward Castes	18841009	330817
f	Others	7946498	63019
<b>12</b>	<b>Minorities Population</b>	<b>5372197</b>	<b>33109</b>
<b>III</b>	<b>AGRICULTURE</b>		
<b>1</b>	<b>Land Holdings</b>		
a	Marginal (up to 1 Hect.)	3420202	89181
b	Small (1-2 Hects.)	1318390	31077
c	Semi-Medium (2-4 Hects.)	598145	13562
d	Medium (4-10 Hects.)	165127	4937
e	Large (10 Hects. and above)	15647	860
	<b>Total</b>	<b>5517511</b>	<b>139617</b>
<b>2</b>	<b>Cropped Area (Hects.)</b>		
a	Gross Cropped Area	4893148	141109
b	Net Cropped Area	4174532	105187
c	Gross Irrigated Area	2027663	80072
d	Net Irrigated Area	1486241	59138
<b>3</b>	<b>Area under different Crops (Hects.)</b>		
a	Rice	1471710	25467
b	Jowar	83401	1403
c	Maize	712981	24813
d	Red gram	251121	2199
e	Green gram	95524	15263
f	Black gram	31221	643
g	Bengal gram	80766	322
h	Groundnut	177914	8896
i	Sunflower	17574	14
j	Chillies	82649	11015
k	Sugarcane	34775	4
l	Cotton	1677492	38953
m	Horticulture	664326	40263
<b>4</b>	<b>Agricultural Marketing</b>		
a	Agricultural Market Committees	180	3
b	Rythu Bazars	36	0
<b>5</b>	<b>Livestock Population</b>		
a	Cattle	4880293	193903
b	Buffaloes	4160419	109028

Sl. No	Parameters	State	Mahabubabad
c	Sheep	12835761	385025
d	Goat	4575695	134477
e	Others	620723	11566
	<b>Total</b>	<b>27072891</b>	<b>833999</b>
<b>6</b>	<b>Poultry Population</b>	<b>80750833</b>	<b>745653</b>
<b>7</b>	<b>Veterinary facilities</b>		
a	Poly Clinics	8	0
b	Hospitals	100	3
c	Dispensaries	907	23
d	Mobile Clinics	37	0
e	Rural Livestock Units	1102	19
<b>8</b>	<b>Fisheries</b>		
a	Fish Rearing Tanks/Reservoirs	24294	996
	Water spread Area (Hects.)	800269	25733
b	Fishermen Coop. Societies	3867	126
	Members	265071	9480
c	Seed released into Tanks/Reservoirs by Govt.	3824	183
	Seed Released (lakh Nos.)	2616	90.72
d	Estimated Production, 2016-17 (Tonnes)	343447	10866
	i. Fish	334952	10766
	ii. Prawn	8495	100
<b>IV</b>	<b>HEALTH INFRASTRUCTURE (GOVT.)</b>		
<b>1</b>	<b>Allopathic Hospitals</b>		
a	Health Sub-Centres	4797	168
b	Primary Health Centres	683	17
c	Community Health Centres	98	1
d	Area Hospitals	31	1
e	District Hospitals	6	0
f	Teaching Hospitals	18	0
	<b>Total</b>	<b>5633</b>	<b>187</b>
<b>2</b>	Ayurveda Hospitals (incl. Dispensaries)	272	10
<b>3</b>	Homeopathic Hospitals (incl. Dispensaries)	130	6
<b>4</b>	Unani Hospitals (incl. Dispensaries)	141	4
<b>5</b>	Naturopathy Hospitals (incl. Dispensaries)	24	1
<b>6</b>	Doctors in all Hospitals	2595	37
<b>7</b>	Beds in all Hospitals	20389	288
<b>V</b>	<b>EDUCATION</b>		
a	Primary Schools	21947	796

Sl. No	Parameters	State	Mahabubabad
	Enrollment	1431438	28802
b	Upper Primary Schools	7311	197
	Enrollment	939109	20748
c	High Schools	11803	236
	Enrollment	3689461	69656
	<b>Total Schools</b>	<b>41061</b>	<b>1229</b>
	<b>Total Enrollment</b>	<b>6060008</b>	<b>119206</b>
d	Model Schools	192	7
	Enrollment	85687	3368
e	KGBV Schools	391	12
	Enrollment	72583	2319
f	Central Schools	47	1
	Enrollment	27294	216
g	Junior Colleges	2537	67
h	Degree Colleges	1196	27
	Seats	426964	9925
i	Engineering Colleges	219	0
	Seats	104598	0
j	Pharmacy Colleges	123	0
	Seats	9226	0
k	MBA Colleges	305	0
	Seats	32874	0
l	MCA Colleges	37	0
	Seats	2436	0
m	B.Ed. Colleges	217	3
	Seats	19100	150
n	Law Colleges	21	0
	Seats	3190	0
<b>VI</b>	<b>SOCIAL SECURITY</b>		
<b>1</b>	<b>Aasara Pensions</b>		
a	Old Age	1341680	42157
b	Disabled	457087	14244
c	Widow	1326049	38053
d	Weavers	34179	312
e	Toddy Tappers	57349	2654
f	Anti-Retroviral Therapy (A.R.T) Patients	30674	0
	<b>Total</b>	<b>3247018</b>	<b>97420</b>
<b>2</b>	<b>FA to Beedi Workers</b>	<b>348763</b>	<b>7</b>

Sl. No	Parameters	State	Mahabubabad
<b>3</b>	<b>Public Distribution System</b>		
a	Fair Price Shops	17229	553
b	Food Security Cards	8207431	209906
c	Anthyodaya Food Security Cards	567911	14275
d	Annapoorna Cards	5084	2
	<b>Total</b>	<b>8797655</b>	<b>224736</b>
<b>4</b>	<b>Sada Bainama Regularization</b>		
a	Applications Received	1119203	86745
b	Survey Numbers Covered	1563124	137546
<b>5</b>	<b>2BHK Housing Programme</b>		
a	Houses Allotted	72596	4440
	i. Rural	39762	1660
	ii. Urban	32834	2780
b	Sanctioned	62426	3640
<b>6</b>	<b>Assignment of Government Land</b>		
a	Land Assigned (Acres)	2040320	67241
b	Beneficiaries	1332127	38619
<b>VII</b>	<b>POWER</b>		
<b>1</b>	<b>Sub-Stations</b>		
a	33/11 KV	2497	55
b	132/33 KV	203	3
c	220/132 KV	66	1
d	400/220 KV	7	0
	<b>Total</b>	<b>2773</b>	<b>59</b>
<b>2</b>	<b>Electricity Connections</b>		
a	Domestic Connections	9504305	153923
b	Industrial Connections	145707	1226
c	Agriculture Connections	2080706	73394
d	Commercial Connections	1171991	12720
e	Other Connections	189046	4980
	<b>Total</b>	<b>13091755</b>	<b>246243</b>
<b>VIII</b>	<b>ROAD INFRASTRUCTURE</b>		
<b>1</b>	<b>Roads &amp; Buildings Department (Length in Kms.)</b>		
	i. State Highways	2731	61
	ii. Major District Roads	13058	509
	iii. Rural Roads	9162	0
	<b>Total</b>	<b>24950</b>	<b>570</b>

Sl. No	Parameters	State	Mahabubabad
	<b>Classification of Roads (Length in Kms.)</b>		
	i. Four Lane Roads	648	4
	ii. Double Lane Roads	7419	303
	iii. Intermediate Lane Roads	527	0
	iv. Single Lane Roads	16357	263
	<b>Total</b>	<b>24950</b>	<b>570</b>
<b>2</b>	<b>Panchayati Raj Department (Length in Kms.)</b>		
	i. Black Top Roads	23185	786
	ii. WBM Roads	13118	546
	iii. Gravel Roads	16343	365
	iv. Earthen Roads	18235	425
	v. Others (CC Roads)	2899	117
	<b>Total</b>	<b>73781</b>	<b>2239</b>
<b>3</b>	<b>Gram Panchayats having Road Facility</b>		
a	GPs having BT roads	8231	227
b	GPs to be covered with BT roads	455	3
<b>4</b>	<b>Habitations (other than GPs) having Road Facility</b>		
a	Total Habitations	15738	1124
b	Habitations having all weather roads	10204	650
c	Habitations not having all weather roads	5534	474
<b>IX</b>	<b>TRANSPORT</b>		
<b>1</b>	<b>Road Transport</b>		
a	RTC Bus Depots	95	2
b	RTC Fleet of Buses	10482	157
c	Daily Operated Length (Kms.)	3631505	61297
<b>2</b>	<b>Railways</b>		
a	Railway Stations	229	7
b	Track Length (Kms.)	1592	45
<b>X</b>	<b>FOREST</b>		
<b>1</b>	<b>Forest Cover (Sq. Kms.)</b>	<b>26904</b>	<b>1490.70</b>
	Percentage of Forest Cover	24.00	51.81
<b>2</b>	<b>Telangana ku Haritha Haram</b>		
	Action Plan for 2017		
a	Nurseries	2843	78
b	Seedlings (lakh Nos.)	4536	127
c	Plantation (lakh Nos.)	4000	115



Sl. No	Parameters	State	Mahabubabad
<b>XI</b>	<b>IRRIGATION</b>		
<b>1</b>	<b>Irrigation Projects</b>		
a	Major Projects	26	2
b	Medium Projects	34	0
<b>2</b>	<b>Mission Kakatiya</b>		
a	Minor Irrigation Tanks	46531	1954
b	Sanctions accorded for restoration		
	i. Mission Kakatiya Phase-I	8165	171
	ii. Mission Kakatiya Phase-II	9113	389
<b>XII</b>	<b>RURAL WATER SUPPLY</b>		
a	Hand Pumps	157873	2685
b	Protected Water Supply Schemes	21910	329
c	Comprehensive Protected Water Supply Schemes	5364	5
d	Individual Household Latrines	1663839	36440
<b>XIII</b>	<b>MISSION BHAGHEERATHA</b>		
a	Habitations to be Covered	24248	1442
b	Pipeline to be Laid (Kms.)	49286	1921
<b>XIV</b>	<b>INDUSTRIES</b>		
<b>1</b>	i. Industrial Units	28515	237
	ii. Employees	605443	3016
	iii. Investment (Rs. Crore)	116022	12
<b>2</b>	<b>TS-iPASS</b>		
	i. Proposed Industries	2926	47
	ii. Proposed Employment	195016	630
	iii. Proposed Investment (Rs. Crore)	49427	54
<b>3</b>	<b>Mines</b>		
a	Mineral Deposits: Block Granite, Latarite, Stone Metal, Quartz		
b	Mines Leased		
	i. Major	104	0
	ii. Minor	2980	198
	<b>Total</b>	<b>3084</b>	<b>198</b>
c	Sand Reaches allotted to TSMDC Ltd.		
	i. Disilting Areas	20	0
	Quantity (CBM)	33911410	0
	ii. Specified Sand bearing Areas	57	0
	Quantity (CBM)	9296724	0
	iii. Pattalands	180	0
	Quantity (CBM)	3840815	0

Sl. No	Parameters	State	Mahabubabad
<b>XV</b>	<b>HANDLOOMS AND POWERLOOMS</b>		
a	Societies	336	0
b	Weavers in Cooperative Fold	82438	0
c	Weavers outside Cooperative Fold	38002	0
d	Powerloom Weavers	49112	0
<b>XVI</b>	<b>WELFARE</b>		
<b>1</b>	<b>Scheduled Castes</b>		
a	Colleges attached Hostels	160	2
	Enrollment	19077	93
b	Pre-Matric Hostels	734	23
	Enrollment	59928	1233
<b>2</b>	<b>Scheduled Tribes</b>		
a	Student Hostels (incl. Ashram Schools)		
	Hostels for Boys	324	17
	Hostels for Girls	148	9
	<b>Total</b>	<b>472</b>	<b>26</b>
b	Boarders		
	Boys	65635	4129
	Girls	52141	3405
	<b>Total</b>	<b>117776</b>	<b>7534</b>
<b>3</b>	<b>Backward Classes</b>		
a	Student Hostels (incl. Colleges)		
	Hostels for Boys	474	7
	Hostels for Girls	226	4
	<b>Total</b>	<b>700</b>	<b>11</b>
b	Boarders		
	Boys	44373	592
	Girls	24328	313
	<b>Total</b>	<b>68701</b>	<b>905</b>
<b>XVII</b>	<b>RESIDENTIAL SCHOOLS</b>		
a	Scheduled Castes	262	5
	Students	96039	2649
b	Scheduled Tribes	89	7
	Students	21919	2364
c	Backward Classes	23	0
	Students	8282	0
d	Minorities	71	1
	Students	12554	232

Sl. No	Parameters	State	Mahabubabad
<b>XVIII</b>	<b>WOMEN AND CHILD WELFARE</b>		
a	ICDS Projects	149	5
b	Anganwadi Centres	35700	1437
c	Anganwadi Workers	28669	1148
d	Anganwadi Helpers	33248	1323
e	Children Enrolled	2427396	97716
<b>XIX</b>	<b>RURAL DEVELOPMENT</b>		
a	Self Help Groups	426705	15499
b	SHG Members	4442215	167807
c	SHGs provided with Bank Credit	63049	2971
<b>XX</b>	<b>TAX COLLECTION - LOCAL BODIES</b>		
a	Gram Panchayats	8695	231
	Demand (Rs. lakh)	42797	697
b	Urban Local Bodies	73	1
	Demand (Rs. lakh)	164436	276
<b>XXI</b>	<b>POST OFFICES</b>		
a	Head Post Offices	38	1
b	Sub Post Offices	692	14
c	Branch Post Offices	4143	179
	<b>Total</b>	<b>4873</b>	<b>194</b>
<b>XXII</b>	<b>BANK BRANCHES</b>		
a	Nationalized Banks	3413	39
b	Private Banks	833	2
c	Regional Rural Banks	817	13
d	Cooperative Banks	269	7
	<b>Total</b>	<b>5332</b>	<b>61</b>
e	ATMs	4605	48
<b>XXIII</b>	<b>TELEPHONES</b>		
a	Exchanges	1220	24
b	Telephone Connections	507540	1779
c	Public Telephones	6729	85
<b>XXIV</b>	<b>LAW AND ORDER</b>		
	Police Stations	799	19
<b>XXV</b>	<b>TOURISM AND CULTURE</b>		
a	TSTDC Units	49	0
b	Tourist Spots	464	7
c	TSS Artists	550	21



# ADMINISTRATIVE MAP

## Telangana State



### Legend

- ★ District Headquarters
- National Highway
- Railwayline
- District Boundary
- Mandal Boundary
- Reservoir
- River

